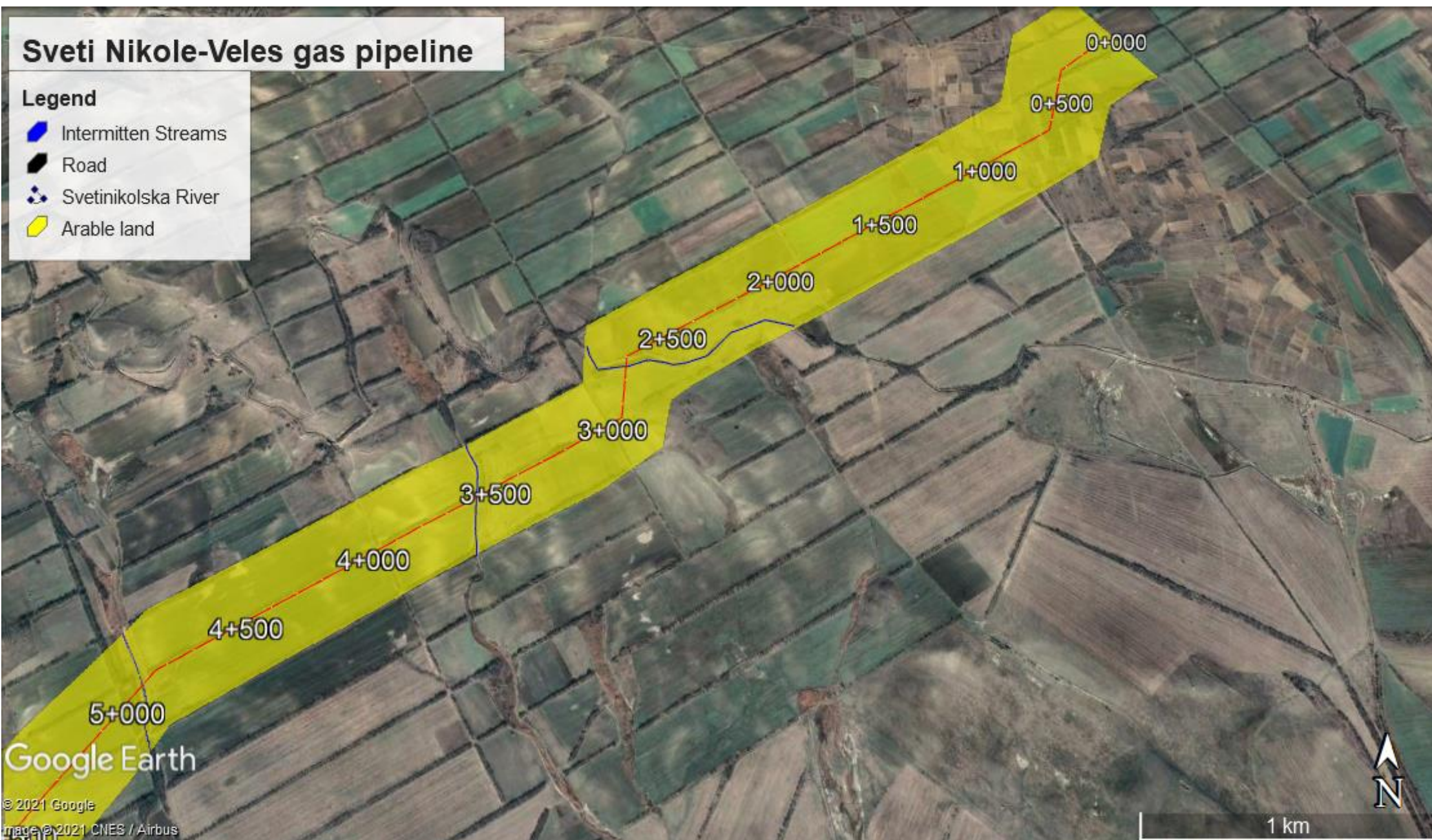


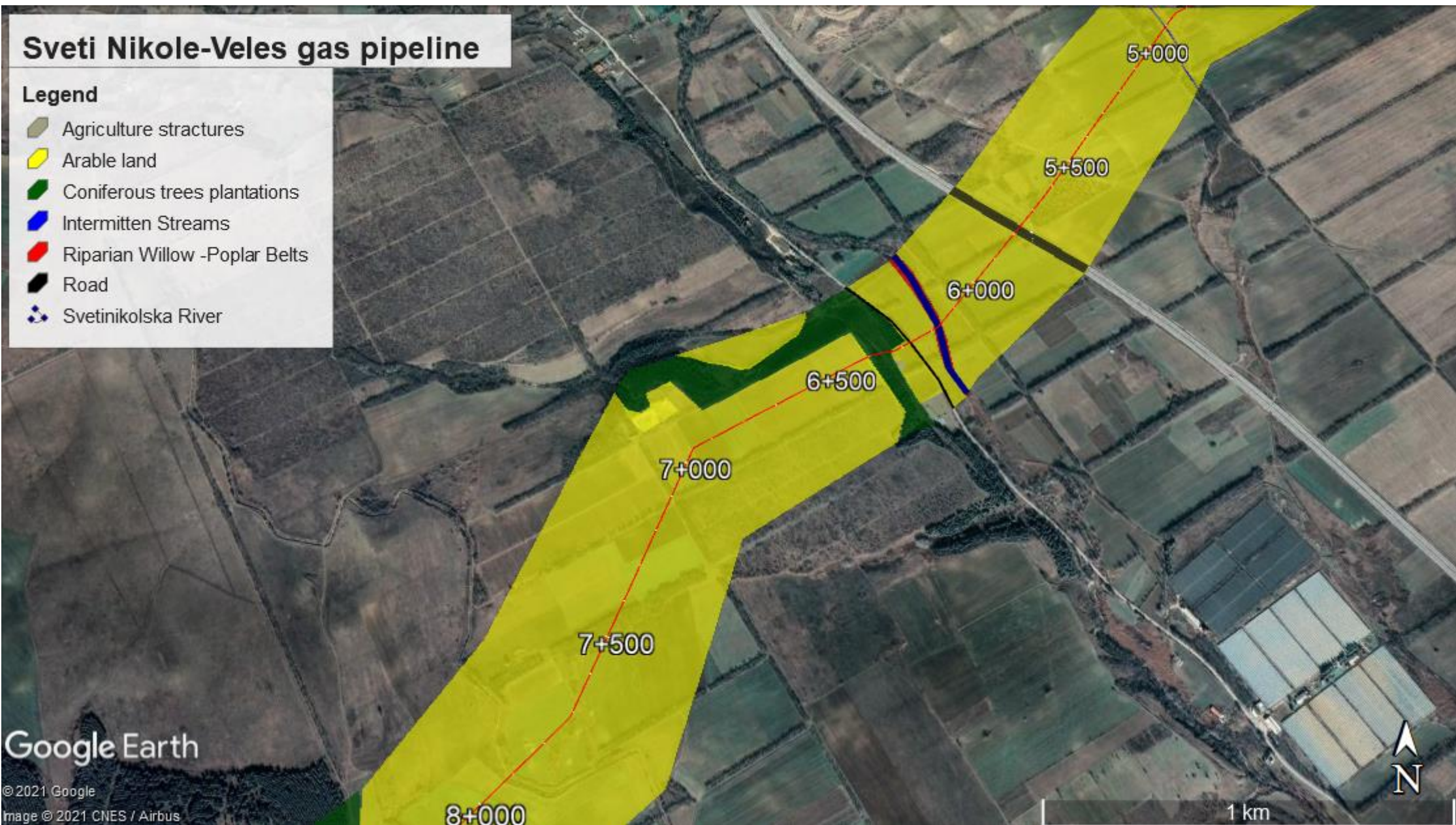
ANNEX 2. Habitat maps



Sveti Nikole-Veles gas pipeline

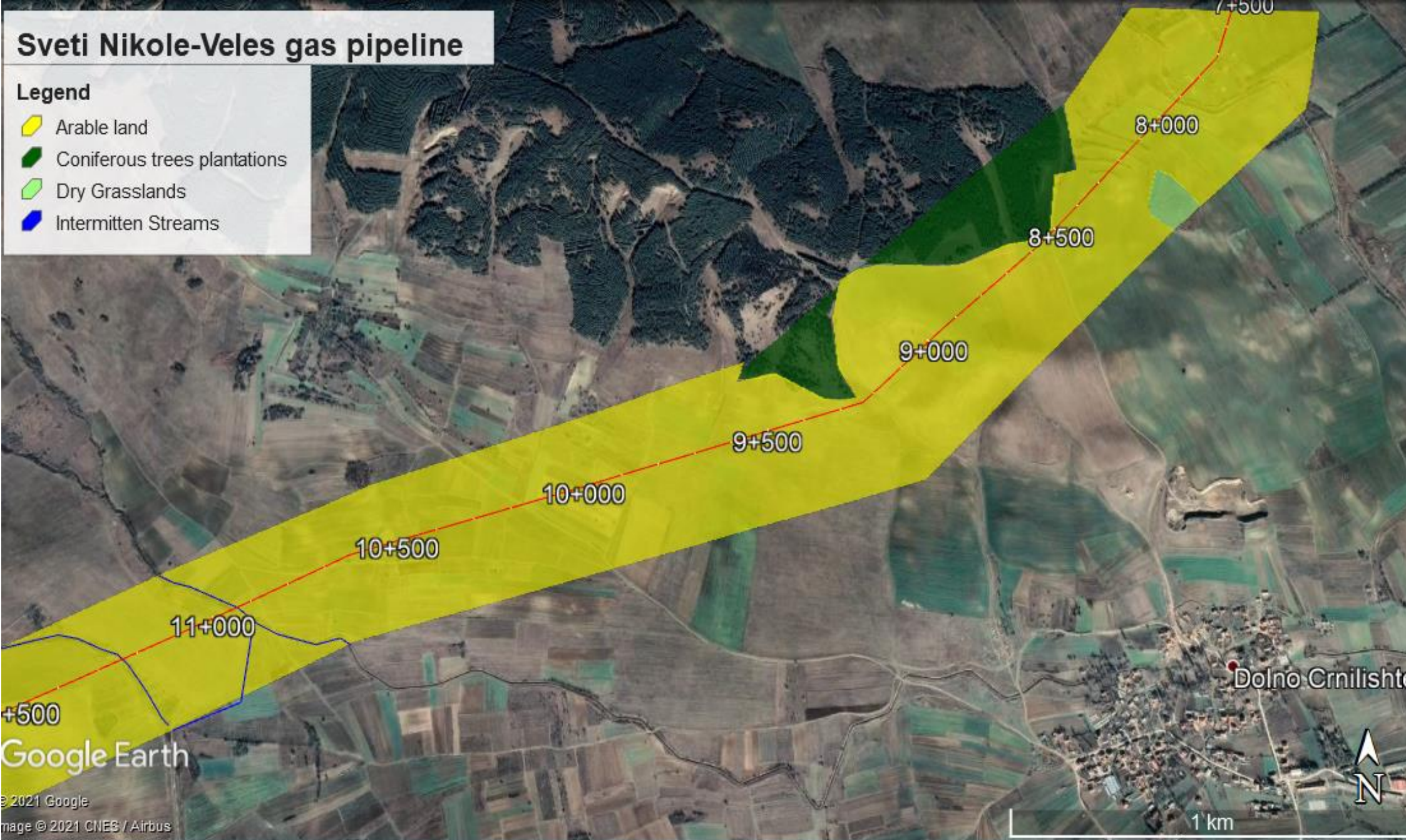
Legend

- Agriculture stractures
- Arable land
- Coniferous trees plantations
- Intermitten Streams
- Riparian Willow -Poplar Belts
- Road
- Svetinikolska River



Sveti Nikole-Veles gas pipeline

- Legend**
- Arable land
 - Coniferous trees plantations
 - Dry Grasslands
 - Intermittent Streams

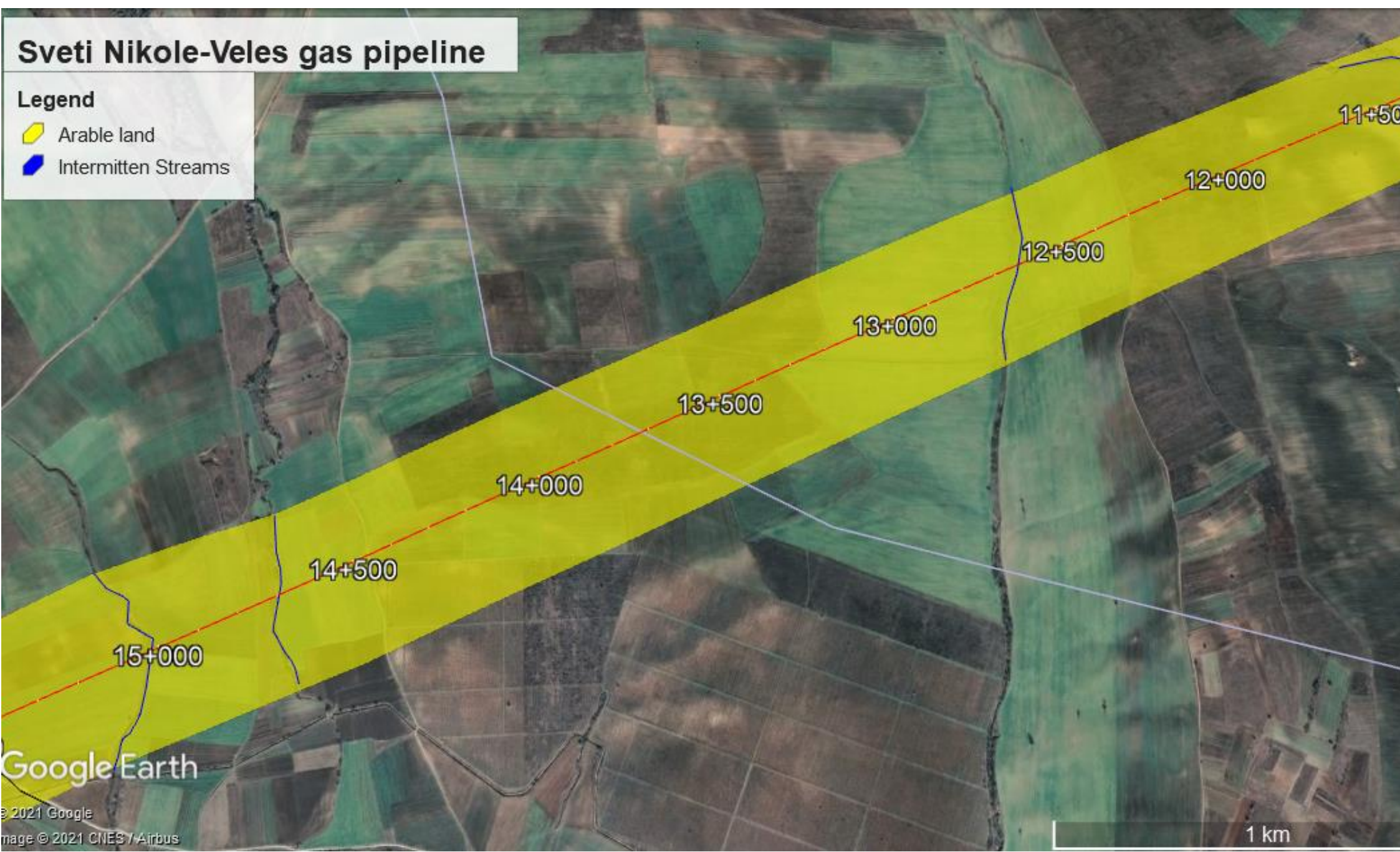


Google Earth

© 2021 Google
Image © 2021 CNES / Airbus





Sveti Nikole-Veles gas pipeline

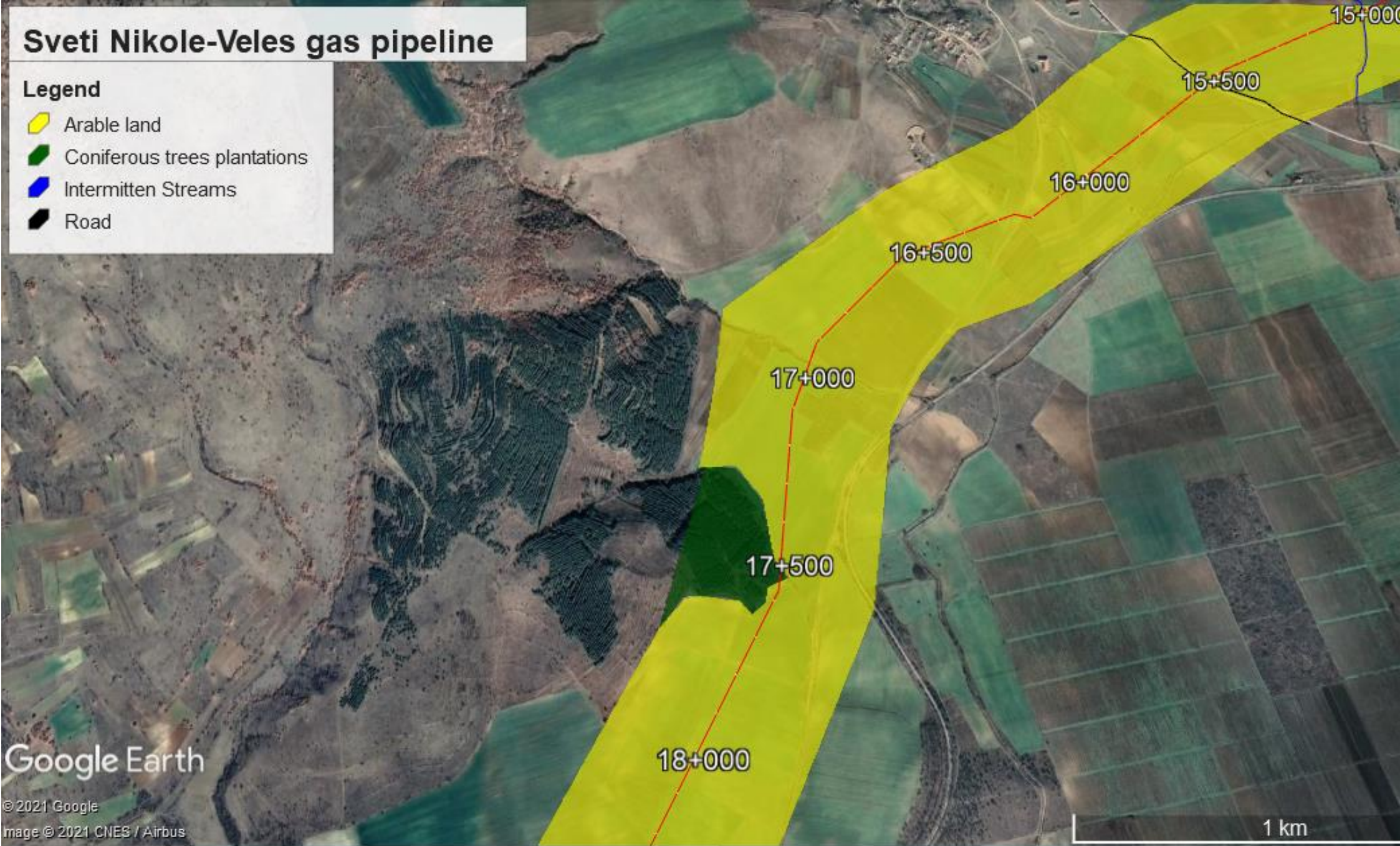
- Legend**
- Arable land
 - Intermittent Streams



Sveti Nikole-Veles gas pipeline

Legend

-  Arable land
-  Coniferous trees plantations
-  Intermitten Streams
-  Road



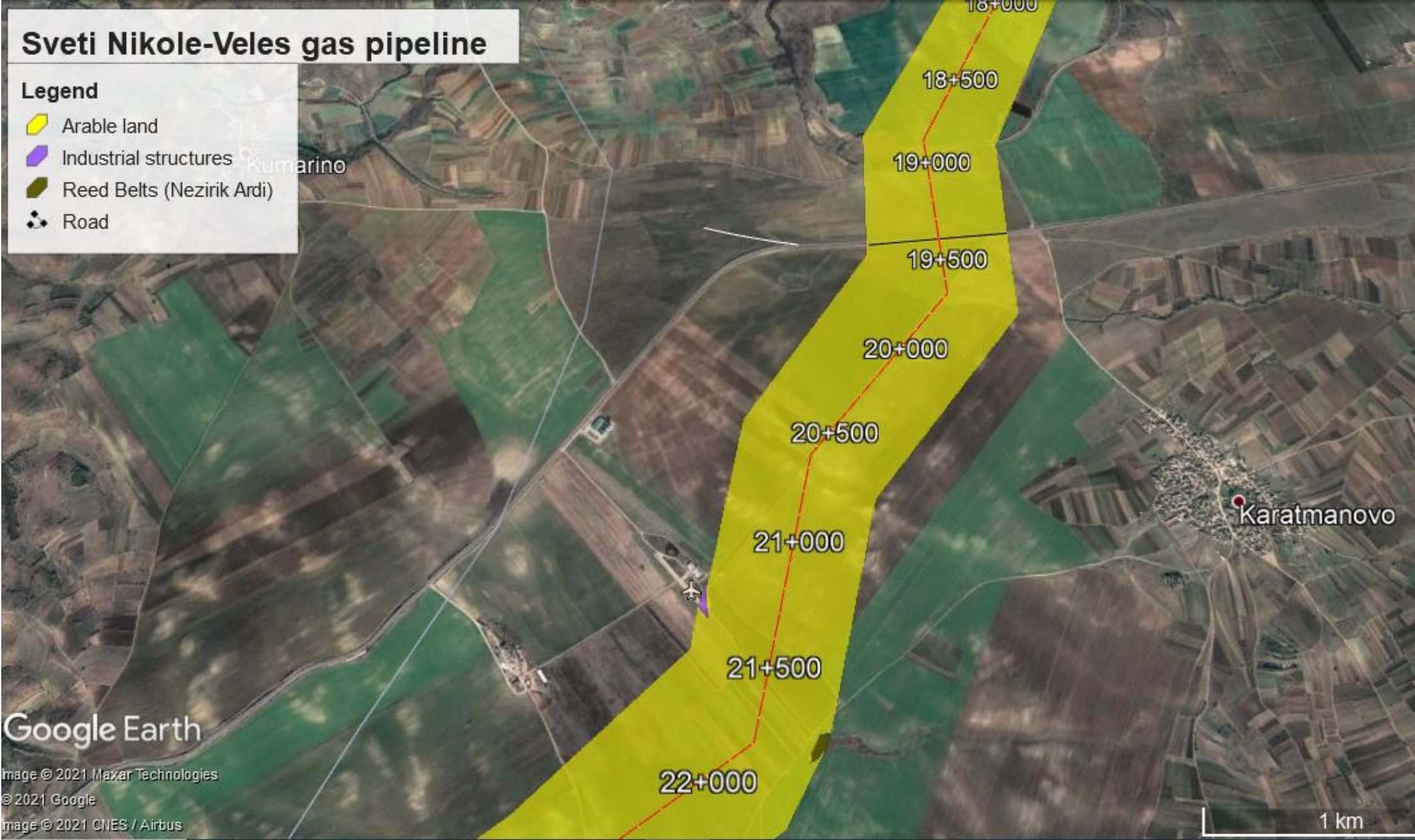
Google Earth

© 2021 Google
Image © 2021 CNES / Airbus

Sveti Nikole-Veles gas pipeline

Legend

- Arable land
- Industrial structures
- Reed Belts (Nezirik Ardi)
- Road



Sveti Nikole-Veles gas pipeline

Chaloshevo

Legend

- Abandoned arble land
- Agricultural stractures
- Arable land
- Degraded oak forest
- Hill pastures with sparse shurbs
- Reed Belts (Nezirik Ardi)

Google Earth

© 2021 Google
Image © 2021 Maxar Technologies

